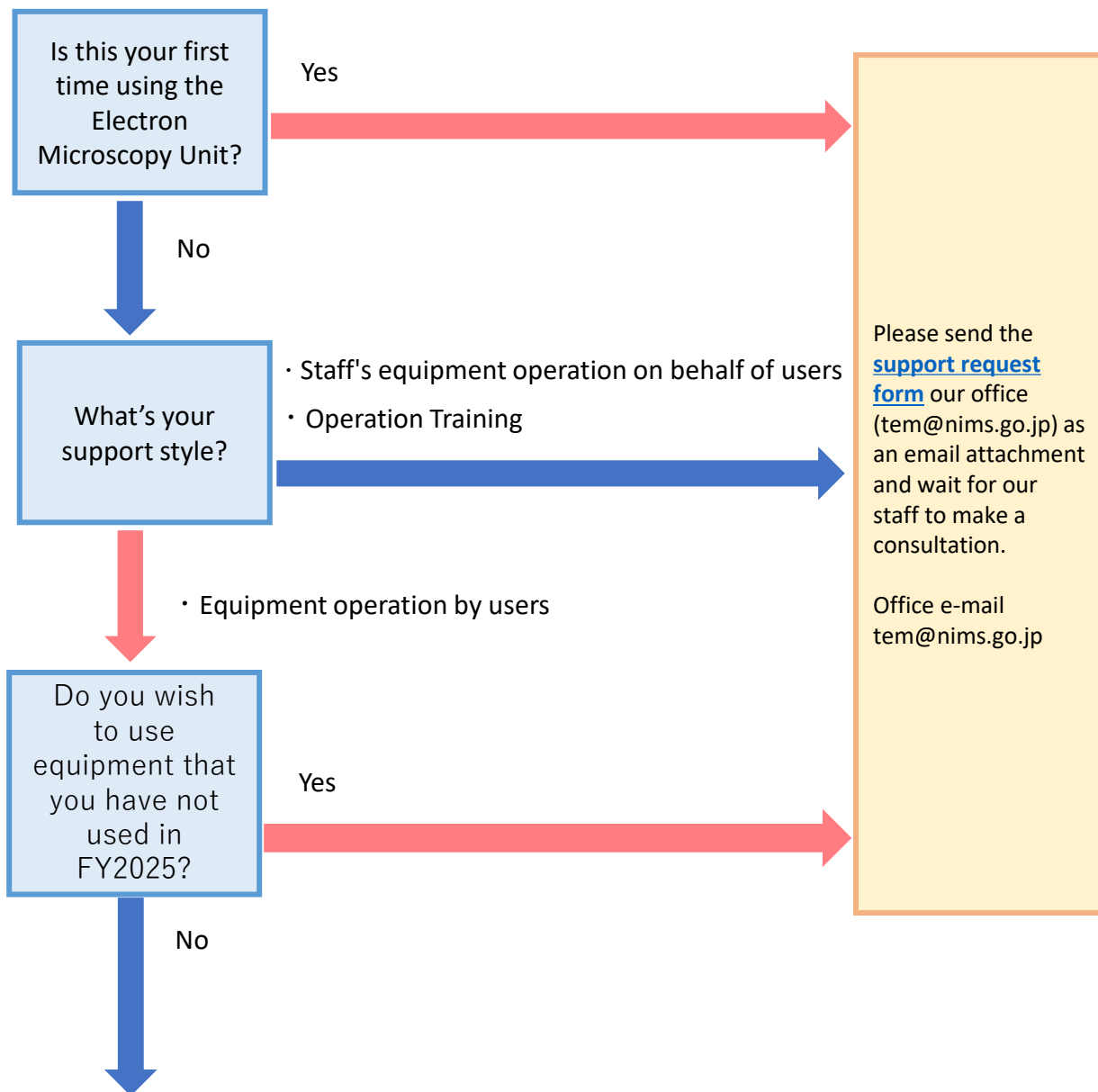


Application Procedure for Use in FY2026 【NIMS External Use】



Please e-mail below that you whether you are continuing user and which system you would like to use (ARIM or NOF).

Office e-mail : tem@nims.go.jp

External user can use ARIM and NOF.

There are many differences such as fees, reports and data registration.

Please confirm each details on the web.

◆ ARIM

<https://www.nims.go.jp/arim/>

◆ NOF

<https://nims-open-facility.nims.go.jp/>