

Optional Class

You can take optional classes as needed. To take the JEM-ARM200F optional class, you must have JEM-2100F license or have experience equivalent to JEM-2100F license. If you'd like to learn the technique corresponding to Others except for HRTEM Analysis system, first obtain the license of the TEM corresponding to that technique.

*To learn EELS and Tomography, JEM-2100F or JEM-ARM200F is required.

JEM-2100



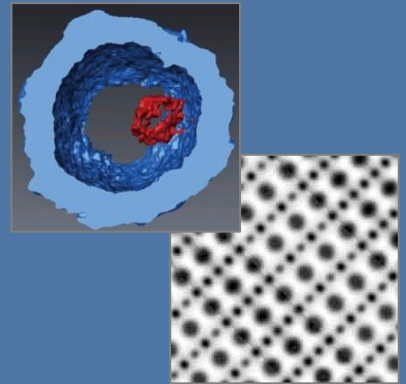
1. JEM-2100
2. Technical Support
3. Standard sample or your sample.
Only samples suitable for training are available.
4. Operation procedure of JEM-2100.

JEM-ARM200F



1. JEM-ARM200F-G or JEM-ARM200F-B
2. Technical Support
3. Standard sample or your sample.
Only samples suitable for training are available.
4. Operation procedure of JEM-ARM200F (TEM/STEM).

Others



1. TEM: Consultation Required
 2. Technical Support
 3. Standard sample or your sample.
Only samples suitable for training are available.
- EELS
 - Tomography
 - In situ (Heating, Cooling, Biasing)
First of all, please obtain a license of the equipment corresponding to the above techniques.
 - HRTEM Analysis system



Technical skills test

Pass

B-License Issuance

As you can add classes that you haven't taken later, please select only the classes you need at this time.

All technical training will be charged as "Technical support"