



WPI Research Center  
International Center for  
Materials Nanoarchitectonics

# MANA



## Access

### NIMS Namiki Site

- **By Tsukuba Express Line** : Take the Tsukuba Express from Akihabara Station in Tokyo to Tsukuba Station in Tsukuba City (approx. 50 min.). Then take the bus bound for Arakawaoki Station and get off at the Busshitsu Kenkyujo mae bus stop (10 min.).
- **By highway bus** : Take the highway bus bound for Tsukuba University leaving from bus stop 5 at the Yaesu south exit of JR Tokyo Station and get off at Namiki 1-chome bus stop (approx. 65 min.).
- **By bus from Narita Airport** : Take the Airport Liner NATT' S bound for Tsuchiura Station and get off at Tsukuba Center bus stop (approx. 100 min.) Then take the bus bound for Arakawaoki Station and get off at Busshitsu Kenkyujo mae bus stop (10 min.).



WPI-MANA Building

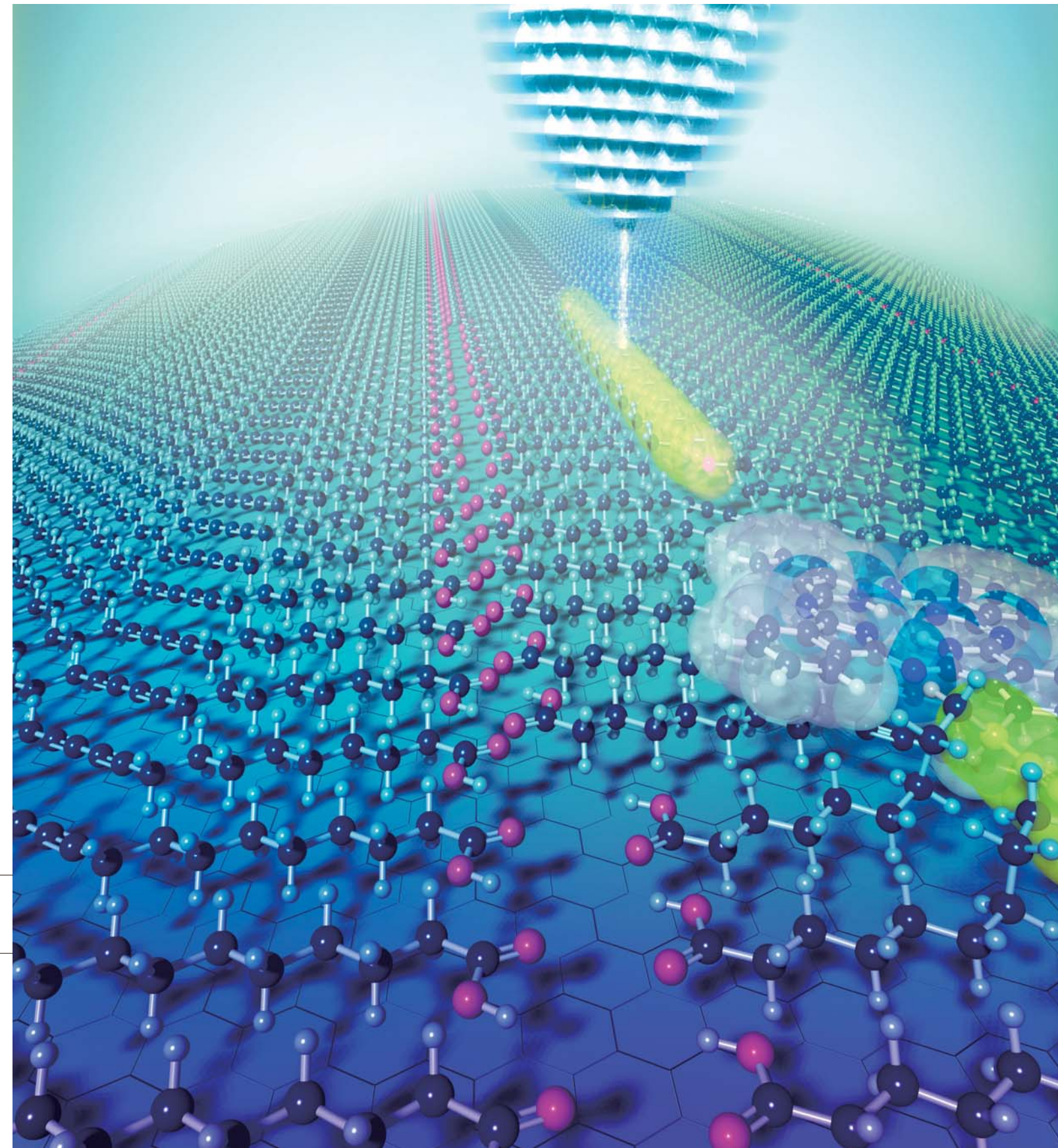


MANA Building

WPI Research Center  
**International Center for  
Materials Nanoarchitectonics  
(MANA)**

NIMS  
**National Institute for Materials Science**

**International Center for Materials Nanoarchitectonics**  
1-1 Namiki, Tsukuba, Ibaraki, 305-0044  
TEL: +81-(0)29-860-4710 FAX: +81-(0)29-860-4706  
E-mail: [mana@nims.go.jp](mailto:mana@nims.go.jp)  
<http://www.nims.go.jp/mana/>





# Oriented Towards a Better Global Future: Pioneering a New Paradigm in Materials Development

In 2007, Japan's Ministry of Education, Culture, Sports, Science and Technology (MEXT) established a program to create new type of research center. The aim was to facilitate advanced research by promoting participation of leading scientists from around the world and by providing an attractive research environment. This was called the World Premier International Research Center (WPI) Initiative. The International Center for Materials Nanoarchitectonics (MANA) is one of the original five centers (a sixth was added in 2010). In order to fulfill its mission as the only WPI center not integrated in a university, MANA has been pursuing a unique path of innovation. Not only have we built a truly international environment with more than half of our researchers coming from overseas, we also are dedicated to the training of young scholars and promotion of interdisciplinary research. In the 21st century, humanity is facing some unprecedented challenges. The explosive growth of demand in a wide range of areas such as energy, natural resources, foodstuff, water, IT communications, transport, medicine and therapy brings with it a number of problems that stretch the finite resources of our planet. In order to overcome these challenges, technological innovation in a wide

range of fields is vital. Such innovation must be brought about by fusing "matter", namely materials, and "mind", that is scientific knowledge on a high plane. MANA was created with the aim of facilitating this type of innovation. A major focus of our activities is the development of materials on the basis of nanotechnology, a discipline that has made tremendous strides over the past quarter century. Going beyond the utilization of various techniques that were previously developed in nanotechnology, we aim for ground-breaking innovation in nanotechnology to explore a new paradigm in materials development. This is what we want to express by the term nanoarchitectonics. In the three and a half years since its inception, MANA has achieved steady progress. This is reflected in a number of benchmarks and numerous insights gained through research pointing the way towards the future. On behalf of all MANA members who are dedicated to pursuing the aims set forth above, I am looking forward to your continued support for our activities.

MANA Director-General Prof. Masakazu Aono



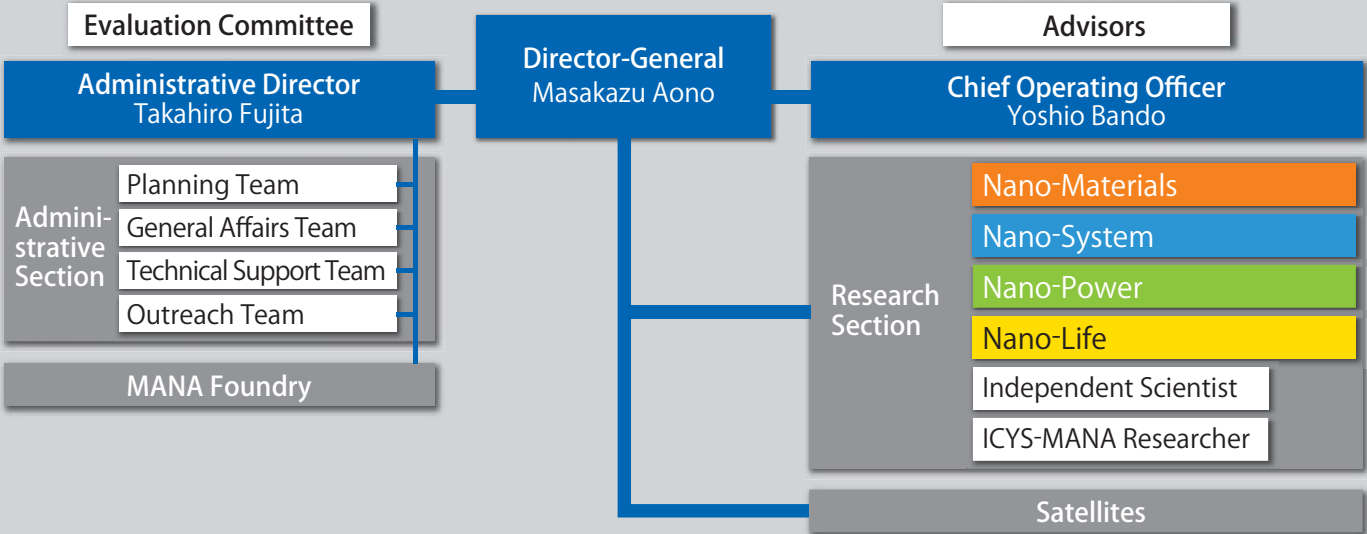
## Mission of MANA

- To promote interdisciplinary research by materials nanoarchitectonics
- To serve as a "Melting Pot" where top-level researchers gather from around the world
- To secure and cultivate outstanding, innovative young scientists
- To construct a network of nanotechnology centers throughout the world

## History of MANA

- 2007 Foundation (October)
- 2008 Reorganization into 4 research areas
- 2009 Number of institute members exceeds 200 (52% of researchers from overseas)
- 2010 Construction of new research building starts

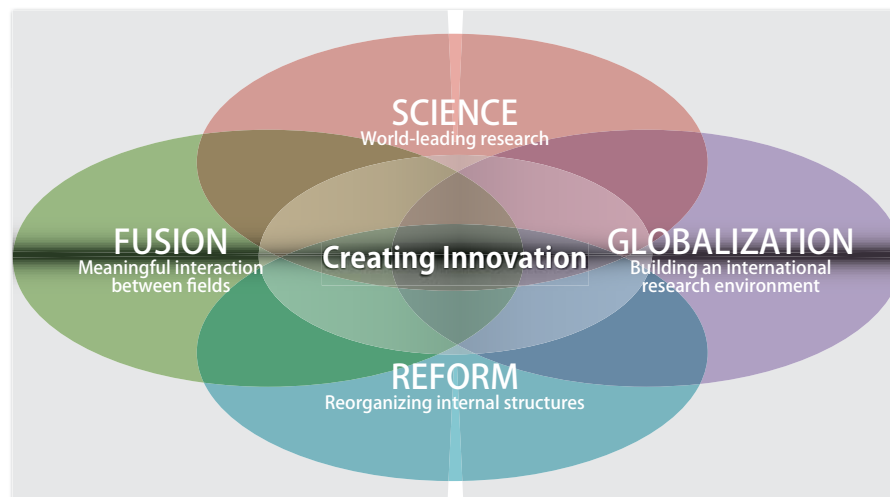
## Organization of MANA





## A Research Center Open to the World

The WPI program of world-class research institutes was established by the Ministry of Education, Culture, Sports, Science and Technology (MEXT) in 2007. It aims to maintain and further Japan's high level of involvement in research also in the 21st century. Dedicated researchers from all over the world will find a vibrant research environment that fosters a high standard of investigation and that is truly open to interaction on an international scale. The institutes of the WPI program have the following objectives: advance leading-edge research, create interdisciplinary domains, establish an international research environment, and reform the organization of research. Each center is actively engaged in building up an extraordinary roster of researchers and in creating the best environment for them to flourish in. Three new institutes were selected as WPI centers and started their operation from December 2012.

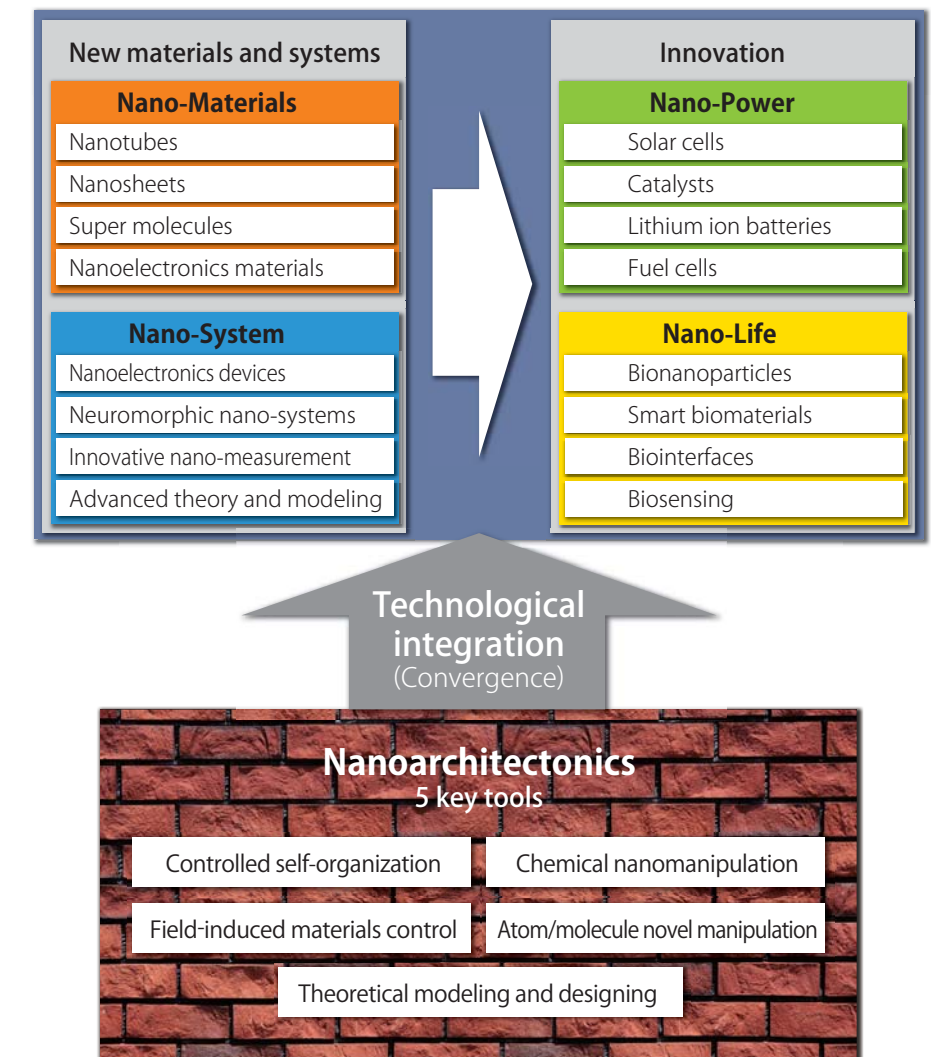


Host Institution	WPI Research Center	Research Fields
Tohoku University	Advanced Institute for Materials Research (AIMR)	Materials Science
University of Tokyo	Kavli Institute for the Physics and Mathematics of the Universe (Kavli IPMU)	Astrophysics
Kyoto University	Institute for Integrated Cell-Material Sciences (iCeMS)	Meso-Control & Stem Cells
Osaka University	Immunology Frontier Research Center (IFReC)	Immunology
National Institute for Materials Science	International Center for Materials Nanoarchitectonics (MANA)	Nanotechnology & Materials Science
Kyushu University	International Institute for Carbon-Neutral Energy Research (I <sup>2</sup> CNER)	Energy & Environmental Sciences

## Four Research Fields Supported by Nanoarchitectonics Based on Five Key Technologies

In the past quarter century, nanotechnology has made impressive progress and has become an important pillar of new materials development. But to develop its full potential, nanotechnology needs to continue on the path of innovation. Towards this aim, the conventional analytic view of nanotechnology must yield to a certain synthetic approach. This is conducive to creating new functions that can be exhibited by nanoscale elements in combination through mutual interactions although they are not present in the isolated element. MANA has coined the term nanoarchitectonics to express this innovation of nanotechnology necessary for a paradigm shift in materials development.

MANA pursues nanoarchitectonics by converging five key tools, namely controlled self-organization, chemical nanomanipulation, field-induced materials control, atom/molecule novel manipulation, and theoretical modeling and designing. These fundamental methods of nanoarchitectonics are harnessed for scientific pursuit organized into four research fields: Nano-Materials, Nano-System, Nano-Power, and Nano-Life.



### Sukekatsu Ushioda

President,  
National Institute for  
Materials Science



The National Institute for Materials Science (NIMS) was the only independent administrative institution selected for a grant by the World Premier International Research Center (WPI) Initiative in 2007 and later in October of that year, established the International Center for Materials Nanoarchitectonics (MANA). The WPI Initiative selects members on the basis

of their ability to attract leading researchers from across the globe and bring together a wide range of researchers including young scholars, postdoctoral associates, and graduate students in an environment that should possess a certain level of "global visibility." Apart from featuring world-class leading-edge research

facilities, NIMS also hosts one of the best international research environments in Japan. In its role as host institution, NIMS fully supports the research activities undertaken by MANA and looks forward to seeing MANA develop into a world-class leading research center in the nanotechnology and materials fields, distinguished both by reputation and achievements.



## Designing Nanoscale Materials With New Properties and Unprecedented Functions

MANA is promoting research that explores new properties and functions intricately linked to nanoscale size and shape. This exploration covers a wide range of inorganic, metallic, and organic materials.

Many new nanoscale materials are being created by utilizing unique synthetic techniques based on nanoarchitectonics, involving soft-chemical, colloid chemical and supramolecular processes. Highly advanced nano-analysis techniques based on transmission electron microscopy allow us to study the structure and properties of these materials in detail.

An example of a one-dimensional nanomaterial is the boron nitride (BN) nanotube. A method for high-purity and large-scale production of such nanotubes was developed at MANA. Methods for synthesizing various other types of nanotubes and nanowires of metals, oxides, nitrides, and sulfides (Si, ZnS, ZnO...) were also successfully established.

Regarding two-dimensional nanomaterials, a unique process for delaminating layered compounds has made it possible to create nanosheets with molecule-level thickness. A large number of nanosheets based on oxides

and hydroxides have been synthesized, and were found to possess superior electrical, magnetic, thermal, and chemical functionalities.

The obtained nanoscale materials are precisely organized or hybridized with other functional modules via various chemical processes involving self-assembly. New nanostructured materials and nanodevices with sophisticated functionalities are being developed through this so-called soft nanoarchitectonics.

For example, BN nanotubes which have excellent thermal conductivity can be dispersed in polymer to create a material suitable for heat sink substrates. Ultrathin films with a high dielectric constant (High-k films) are also being developed with oxide nanosheets. In this way, research is opening up many new possibilities.

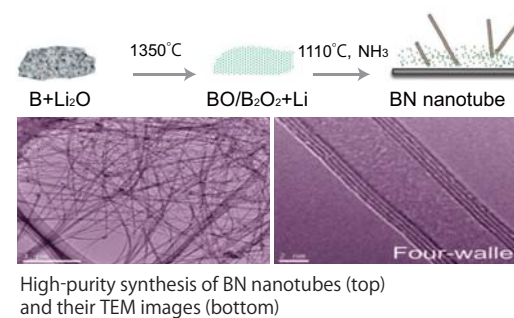
The creation of nanoscale materials and the exploration of their applications have almost unlimited potential. Based on the concept of nanoarchitectonics, MANA is developing novel synthesis techniques to bring forth new materials and new processes that will spur innovation across a range of sectors including electronics, environment protection, and energy technology.

### Creating functional nanotubes and nanowires

While working on the creation of new types of inorganic nanotubes and nanowires, diverse synthetic methods such as elemental doping, core-shell structure fabrication, and composite forming are pursued. The combination of these techniques is instrumental in the development of materials with new functionalities.

For example, a method for large-scale synthesis of Boron (B) – Carbon (C) – Nitrogen (N) nanotubes and nanosheets of high purity was developed and applied to the creation of polymeric nanocomposite films through nanophase dispersion in a polymer. Good insulation and excellent thermal conduction properties make this type of films a good candidate for use in heat dissipating substrates.

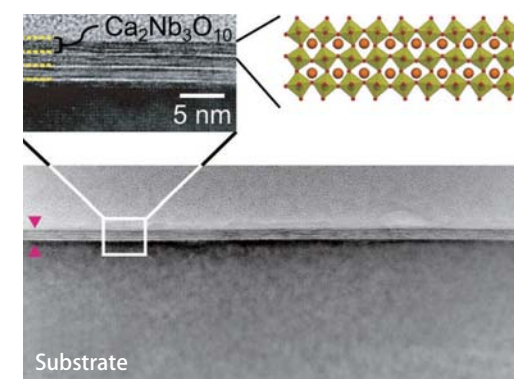
Another case in point is high-purity semiconductor nanowires made of inorganic materials such as ZnO, ZnS, and Si/Ge. Doping techniques are explored with a view towards the use of such nanowires for ultra-violet light sensors, solar cells, and other applications.



### Developing functional nanosheet films

Solution-based techniques for layer-by-layer assembly of colloidal oxide nanosheets have been developed and novel functionalities have been designed for highly-organized multilayer or superlattice films of various nanosheets.

The illustration below shows a multilayer film of niobium oxide nanosheets (thickness 2nm) with a perovskite-type structure, fabricated by applying the Langmuir-Blodgett method. The obtained film possesses superior dielectric/insulating performance ( $\epsilon_r = 210-230$ ,  $J_c < 10^{-8} \text{ A cm}^{-2}$  at 1 V), showing promising potential for applications such as capacitors, transistors and so on.



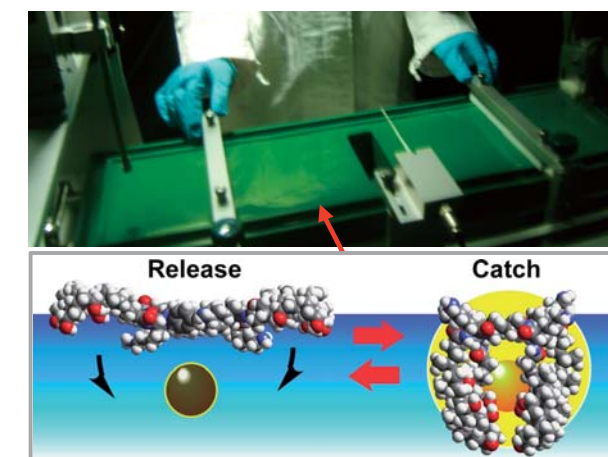
3-layer film of  $\text{Ca}_2\text{Nb}_3\text{O}_{10}$  nanosheet (cross-sectional TEM image)

### Operating a molecular machine by hands

When molecules of a suitable structure are spread on a liquid surface, a supramolecular film with a thickness of only a single molecule (monolayer) can be created. A molecular machine\* can be assembled within monolayers. When the film is compressed or expanded by hands, as shown in the illustration below, the molecular machine will take on an opened or closed conformation, and a target object can be captured or released.

The principle is applicable not only to the surface of a liquid but also to the surface of various other materials. This could, for example, make it possible to remove toxic or polluting substances or release drugs simply by compressing or expanding a material by hand. There is keen interest in the potential applications with this technology.

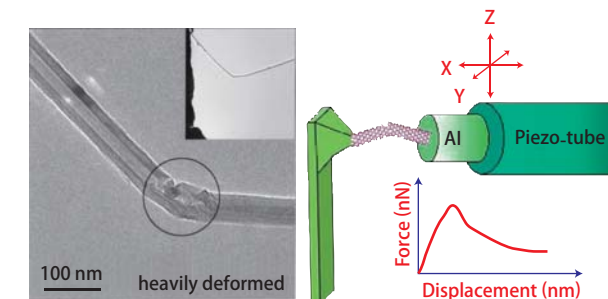
\*Molecular machine: Molecules that change their structure in response to external stimulation like machine.



Hand-operation (top) and molecular conformation change dependent on pressure (bottom)

### Measuring nanoscale material properties

Advanced electron microscope technology is being employed to explore and clarify the atomic structure as well as properties and functionalities of new nanoscale materials. For this purpose, MANA is utilizing special piezo-driven type sample holders having the functions of a scanning tunneling microscope and an atomic force microscope within a transmission electron microscope. These are used to measure the electrical and mechanical properties of nanotubes and nanowires, for example, BN nanotubes.



Mechanical properties of a BN nanotube measured inside TEM



## Revolutionary Functionality Realized through Mutual Interactions of Nanoscale Functional Units

Our research activities encompass not only the discovery and exploration of nanoscale matter and materials with hitherto unknown functions, research also extends to the development of break-through systems that can be created through mutual interactions of such nanoscale units. For this purpose, researchers investigate how nanoscale structures can produce novel linked functionalities. One of the goals of nanoarchitectonics is the exploration of how such structures can be organized into nano-systems of varying complexity and how this changes their behavior.

In the long run, such nano-systems have tremendous promise for various technical fields, but our research is focused on innovation in three areas, namely advanced information processing and communications, advanced environment sensing, and effective solar light application.

For advanced information processing and communications, the development of new nano-devices that far surpass the limitations of conventional CMOS devices used in today's computers is of course a major goal.

But going beyond that, it is necessary to rethink computation algorithms and architecture, and learn from neural networks while aiming for new kinds of information processing nano-systems and quantum information processing nano-systems.

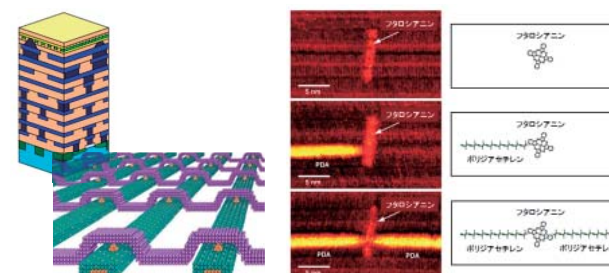
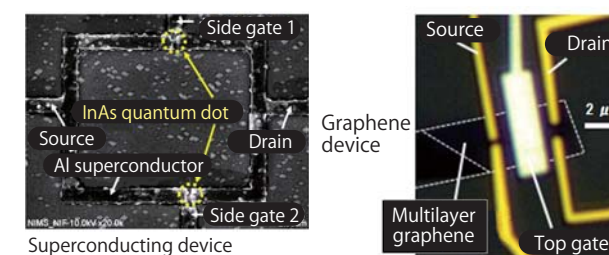
In the field of advanced and highly sensitive environment sensing, the focus is on the detection and identification of the several hundred to several thousand types of molecules present in the gases, liquids, and biological materials that make up the environment. Research is focused on how to achieve this on the single molecule level while at the same time maintaining high spatial resolution measured in nanometers.

With a view to the effective use of sunlight, we are currently developing solar nano antenna collector systems of advanced design.

These research and development activities are based on the concepts and methodology of nanoarchitectonics. The development of new nano-system evaluation methods and the new concepts of theoretical science also are important aspects that guide our work.

### Creating revolutionary nano-system devices

Silicon CMOS devices are the mainstay of current computer technology. But for the future, the development of innovative devices that go far beyond CMOS is absolutely necessary. Otherwise, it will simply not be possible to process the enormous amounts of information that are becoming the norm in the 21st century. Some of the salient keywords are ultrafine (atomic and molecular scale), ultra high speed (including quantum information processing), and low power consumption (including superconducting devices). Nanoarchitectonics is used for basic and applied research into atomic switches, molecular devices, superconducting quantum information devices, graphene devices, as well as solar nano-antenna collector systems that make effective use of sunlight.

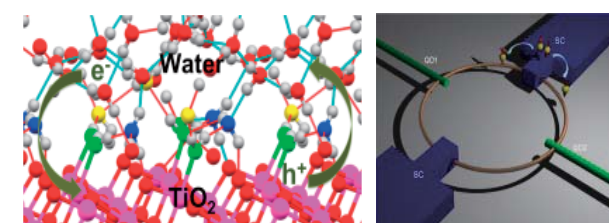


Integration of atomic switches

Single-molecule device

### Nano-system theory

In nanoarchitectonics, theoretical research and analysis of the new functionalities exhibited by nano-systems, as well as the theoretical exploration of the principles that allow new functions to be formed through such systems are vital aspects of scientific work. Along with first-principle calculation, new calculation methods that are able to incorporate atomic numbers on a much higher scale than before are being applied extensively.

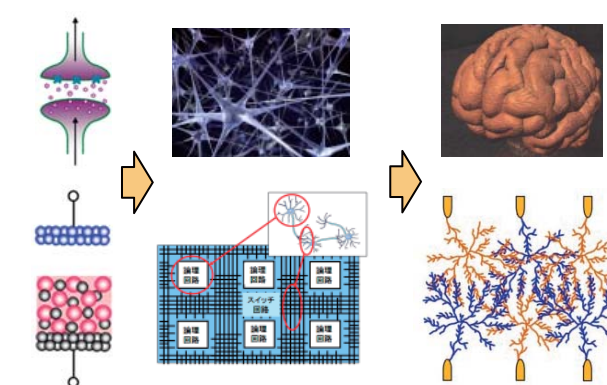


Dynamic processes on the molecule level

Proposed new superconducting device

### Towards a neural network type nano-system

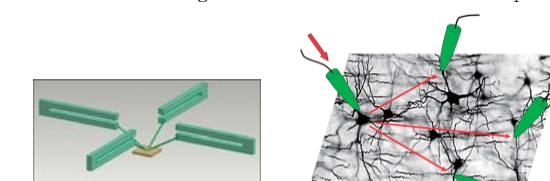
Modern computers have made enormous progress and have brought about a revolution in the way information is processed. However, after about half a century, von Neumann type computer algorithms that perform calculation according to stored program instructions have reached a plateau, and radical new approaches are called for. Will it be possible to realize computers that perform calculations without programs in a creative manner that emulates the human brain, computers that do not rely on existing device configurations and software instructions, by configuring systems that are made up only of nano-scale materials and components? This is the kind of challenge that is being pursued from the nanoarchitectonics perspective.



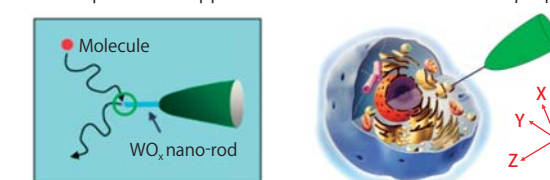
Neural network type computing circuit realized directly on the materials level

### Developing new nano-system evaluation methods

Just as the age of modern nanotechnology was ushered in by the invention of the scanning tunneling microscope (STM), the future evolution of nanotechnology is dependent on the ongoing development of new measurement methods. This is particularly important in the field of nanoarchitectonics. Subsequently to introducing the world's first multiple probe scanning tunneling microscope (STM), we have developed an atomic force microscope (AFM) with four probes operated easily. We are also developing a single molecule detection method with a high spatial resolution, a super parallel high-sensitivity molecule detection method, and a new nano-magnetism measurement method subsequently.



Development and application of AFM and STM with multiple probes



Development and application of single molecule sensing method with high spatial resolution



## Effective Conversion of Materials and Energy Is Crucial to the Realization of a Sustainable Society

The biggest challenge facing humanity today is the move away from our dependence on energy that is derived from fossil fuels. Renewable energy is the key if we want to realize a sustainable society. Consequently, natural energy sources with the sun as the prime source must be converted with high efficiency into electricity and fuel (namely hydrogen,  $H_2$ ). Also, because the supply of natural energy as well as the demand will vary depending on the geographical position and time frame, efficient storage and transport of energy are also of high importance. Furthermore, production processes as well as all sorts of devices and equipments must be designed so as to consume fewer resources and less energy.

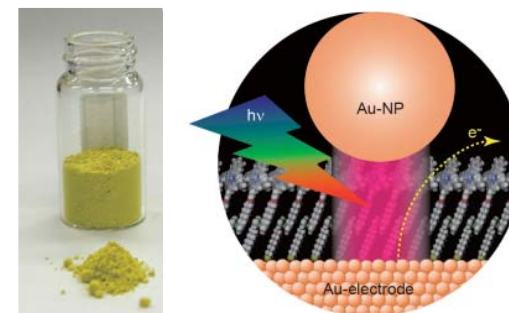
Plants efficiently utilize sunlight to fix carbon dioxide ( $CO_2$ ) and obtain energy. The key to these processes is the efficient arrangement of molecules that perform various tasks such as transporting electrons and catalyze chemical reactions. To make efficient use of solar energy, we need similar capabilities.

When storing, transporting, and retrieving energy through means such as secondary batteries and fuel cells, efficient transport of ions and electrons are required and controlled arrangement of atoms and molecules at interfaces is essential. Furthermore, chemical processes that conserve resources and energy would not be realized without catalyst, which promotes specific reaction with high selectivity and high efficiency. Control of the arrangement of atoms and molecules on the catalyst surface is a vital aspect here.

The scientific underpinning for the realization of a sustainable society therefore lies in the ordered assembly of atoms and molecules based on the rational design, i.e., surface nanoarchitectonics. Thus, the "Nano-Power" field employs the concepts of surface nanoarchitectonics to directly control the nano structure on the atomic and molecular level. The research aims at illuminating and exploring methods and processes for interconversion between energy and matter with high efficiency.

### Capturing the energy of the sun

Based on the concept of nanoarchitectonics, research in this area focuses on two approaches. One involves the use of semiconductor photocatalysts to produce hydrogen by splitting water, or to reductively fix carbon dioxide. The other approach involves semiconductors or metals with a layer of functional molecules on the surface for photoelectric conversion or for reductive fixation of carbon dioxide.

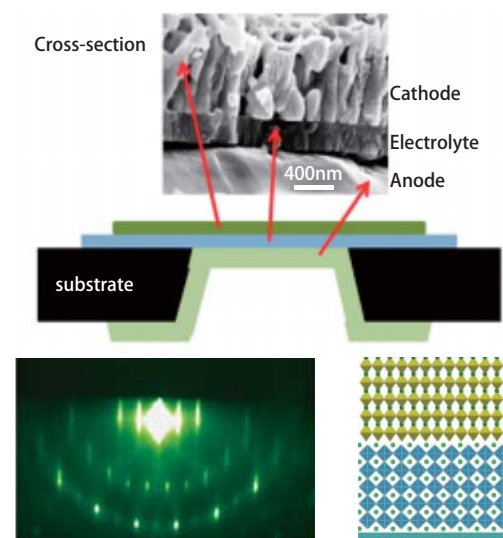


Highly efficient photocatalyst for water oxidation responsive to visible light

Enhancing photoelectric conversion efficiency through the use of nano gap light antenna effect

### Efficient storage and use of energy

Secondary (rechargeable) batteries are the most widely used energy storage device, but they still leave a lot to be solved in terms of efficiency and safety. One way to solve such problems and drastically improve reliability is to turn the entire battery into a solid through the use of solid ionic conductors. If hydrogen is to be used as energy medium, the development of fuel cells that can convert hydrogen into electricity is essential. In both cases, the key to improve performance lies in increasing the conductivity of the ionic conductor and controlling interfacial structure. Towards this end, new electrolyte materials are being developed based on nanoarchitectonics and interfacial ion transfer mechanism is under investigation.

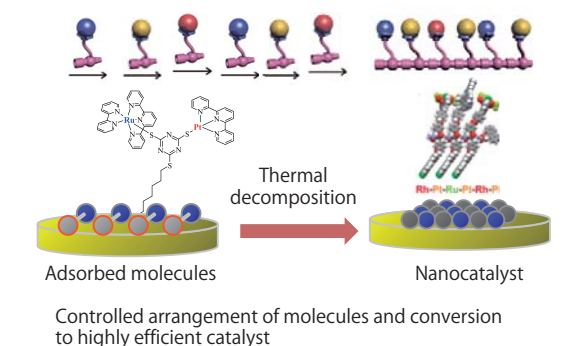


Top: Solid oxide fuel cell

Bottom: Highly oriented electrolyte for lithium ion battery

### Programmed arrangement of atoms and molecules to form ultimate catalysts

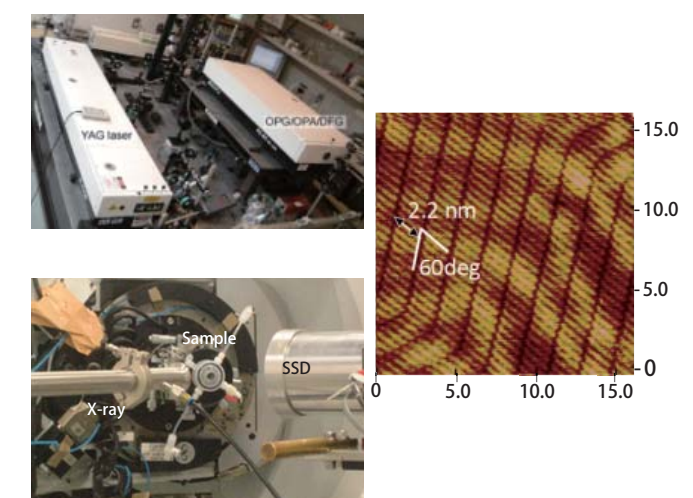
To control and efficiently proceed chemical reactions, catalysts that accelerate each elemental step such as cleavage and formation of chemical bonds are essential. For complex chemical reactions, multi-functional catalysts are required. Ultimate catalysts to realize highest efficiency are being developed by utilizing surface nanoarchitectonics to arrange various atoms in desired positions.



Controlled arrangement of molecules and conversion to highly efficient catalyst

### Determination of Interfacial structure with spatial resolution of 1 billionth of a meter and time resolution of 10 trillionth of a second

In situ, real time determination of the structure of interfaces, particularly solid/liquid interfaces, at high spatial and temporal resolution is essential to achieve the efficient harvesting of solar energy, storage and usage of chemical energy, and catalyst reactions based on surface nanoarchitectonics. For this purpose, scanning probe microscopy, laser spectroscopy, x-ray scattering/absorption using synchrotron radiation and other advanced measurement techniques are developed to analyze interfacial structures with a spatial resolution to 1 billionth of a meter (1nm) and measure electron transfer dynamics with a time resolution to 10 trillionth of a second (0.1psec).



Top: Laser spectroscopy setup

Middle: STM image of molecule resolution in liquid

Bottom: X-ray absorption spectroscopy setup



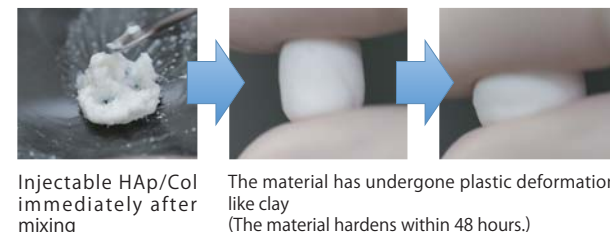
## Innovative Medical Approaches May Draw on Nanoscale Biomaterial

The smallest building block of the human body is the cell. Aggregations of cells along with the protein that binds them together and other elements of the biological matrix make up the so-called tissue, and multiple such tissues in turn form the organs with their various functions. Under this aspect, the human body can be seen as a hierarchical entity at whose base lies an elaborate and delicate nanostructure. To pursue the human health, many diseases should be overcome by both the understanding complicated homeostasis of human body and the accumulation of knowledge of biomolecules, cell and biological reaction. Even though the medicine in modern society has been well advanced, the cancer is the highest rank in the cause of diseases. Many researchers made much effort to develop the new treatment for cancer disease. In the nano-life field, enhancing the natural regenerative power of the human body is an important concept for treating diseases. The aim is to create materials suitable for "materials therapy", i.e. materials

that sustainably elicit a regenerative and curative effect from the living tissue. Such materials designed and produced with nanoarchitectonics methods are expected to have an effectiveness that is comparable to conventional medicines. Drawing on the results of past research as inspiration, MANA is intensively working towards the development of such new nano-life materials, for example artificial bone mimicked by human bone, establishment of sensor cells, drug eluting stent, biodegradable materials, nano-particle for drug delivery system. Our researchers aim at human-related nanotechnology that would relate to clinical treatment as a goal. Actually, we carry out basic study such as bio-imaging, nano-medicine, regenerative medicine and bio-interface, based on the close collaboration of materials, nanotechnology and biology.

### Artificial bone by mimicking human

We succeeded in synthesizing a composite (HAp/Col) having a nanostructure and chemical composition similar to those of bone by a very simple and mass-productive method by utilizing the interfacial interaction of the Ca in HAp and the carboxy group of Col in accordance with the concept of nanoarchitectonics. However, in order to regenerate living tissue with a required size micro to macroscale structures of a nanostructured material have to be controlled. We succeeded in forming the HAp/Col in sponge-like porous material, unidirectional porous material, sheets, injectable material, etc., and clarified that the HAp/Col is metabolized in the body in the same manner as the transplanted autologous bone. The porous material is now in the final stage leading to practical application.

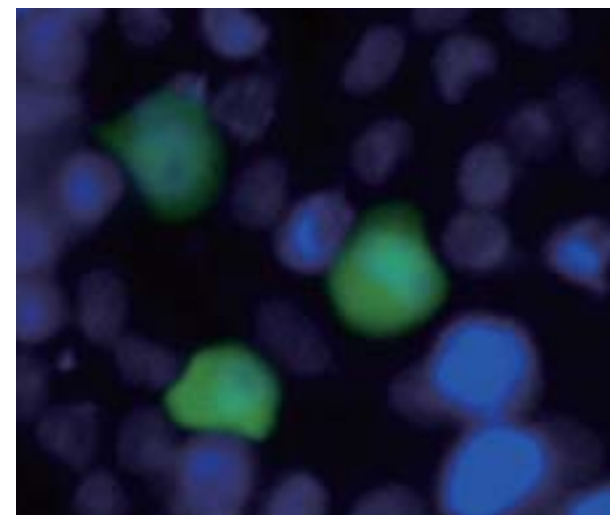


Injectable HAp/Col immediately after mixing

The material has undergone plastic deformation like clay (The material hardens within 48 hours.)

### Sensor cells

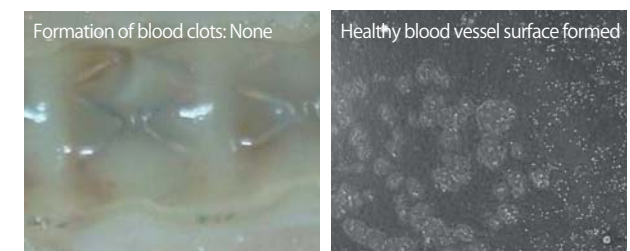
Adapting techniques from molecular biology and cell biology, work on development and application of sensor cells is progressing. It has been found that if a cell can be made to express a fluorescent protein in response to a signal, this method can be used to detect trace amounts of toxic metal ions and anticancer agents. This is expected to be an extremely effective technique for evaluating the toxicity of quantum dots and nanoparticle materials.



Sensor cell emanating light in response to extremely small traces of toxic material

### Drug-eluting stent

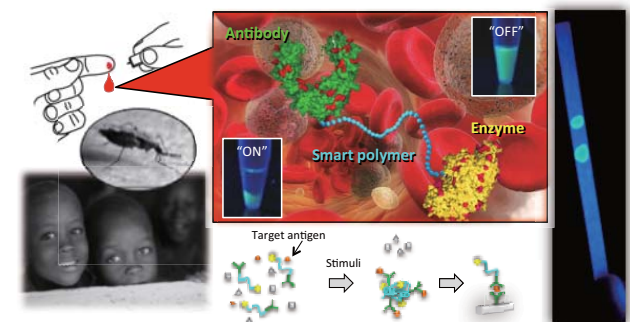
Stents are widely used to expand blood vessels when constriction (stenosis) of a blood vessel occurs due to atherosclerosis. However, recurrence of stenosis (i.e., restenosis) has been a problem with conventional stents. Therefore a stent was developed in which a bio-originated material on the surface elutes a drug that induces endothelial cells to the area, thereby promoting the formation of tissue. As a result, it was found that tissue which is very similar to the surface of a healthy blood vessel can be formed stably.



Interior of blood vessel with drug-eluting stent currently under development. No blood clots are formed, and interior surface is smooth

### Early diagnosis / smart biomaterial research

We are working to develop an early diagnosis system that is inexpensive, simple, and speedy using "smart polymers," which are driven by energy sources (sunlight, frictional heat generated by rubbing finger) that can be secured in environments with inadequate infrastructure, for example, in areas with low rates of electrification. Concretely, we designed a "nano-linker" that joins antibodies and enzymes using a smart polymer only 10 nm in length. After antibodies capture antigens (biomarkers) which exist in minute quantities in blood, antigens can be concentrated and refined by structural modification of these nano-linkers by external stimuli. Early diagnosis is also possible by amplifying those signals several 10 or even several 100 times by an enzyme reaction. In the future, detection of cancer markers, etc. from sweat, urine, and tear is also expected to be possible using these nano-linkers.



Design of "nano-linker" using a smart polymer. Because the driving force for this nano-linker is provided by "available energy" such as sunlight or frictional heat generating by rubbing with a fingers, early diagnosis is possible even in areas with limited infrastructure



## Creating a Cosmopolitan Environment that Fosters Interaction Across Different Disciplines and Cultures

When people from diverse backgrounds and with different opinions and viewpoints are able to freely meet and interact, an environment highly conducive to innovation is created. MANA sees itself as a melting pot that offers researchers from a wide range of fields and with diverse cultural and national backgrounds the opportunity to work in such a cosmopolitan environment. Whether in the lab, in the cafeteria, or during events and other activities, there are always opportunities for communication and interaction. We believe that comprehensive research that spans diverse fields will prove beneficial for many positive future developments. With a view to further enhancing the cosmopolitan atmosphere at MANA, we are actively encouraging the participation of scientists from around the globe. Currently, more than half of our researchers come from countries other than Japan.

### MANA's unique 3D system for fostering human resources

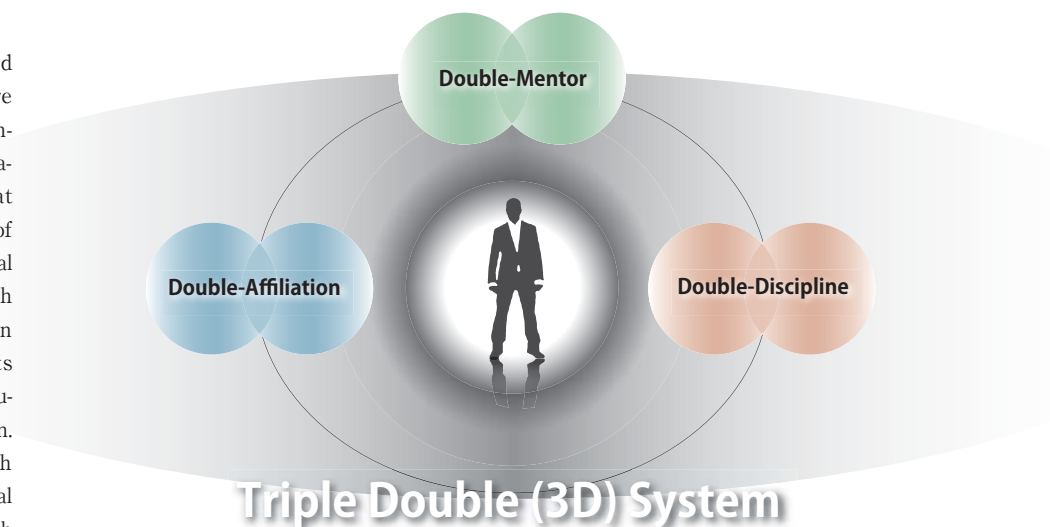
Young researchers at MANA which is affiliated with NIMS are encouraged to work under the tutelage of one NIMS member and one external non-NIMS member, often based overseas. Young researchers typically have two mentors (Double mentor), are affiliated to two research institutions (Double affiliation)

and conduct research in two fields (Double discipline). This is called the 3D, or Triple Double System. It aims at fostering young researchers with a truly global perspective and the capability to adopt an interdisciplinary approach.

Many independent scientists work part of the year under their overseas mentor, to hone their skills. Direct contact and interaction with top-level researchers around the world is invaluable for staying abreast of advanced developments at the cutting edge of science. This encourages them to undertake discipline-integrated research and serves to cultivate a global perspective in them.



A young MANA researcher (right, Dr. Fukata) in discussion with Prof. Wang (left), MANA Satellite PI, the Georgia Institute of Technology.



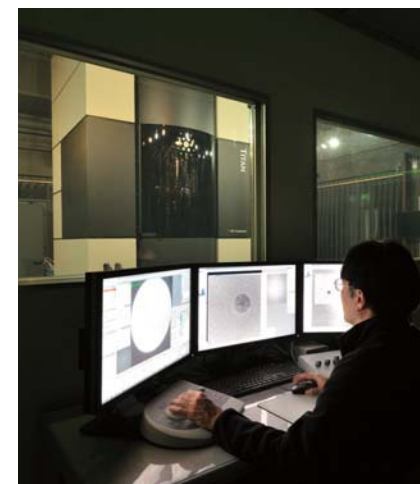
Prof. Kroto (1996 Nobel Laureate in Chemistry) and an ICYS-MANA Researcher (Dr. Fang)

### ICYS-MANA Researcher

ICYS-MANA is an evolution of the "International Center for Young Scientists" (ICYS) program originally hosted by NIMS. Gifted and ambitious young researchers from around the world can apply, and those who are selected are given the opportunity to conduct their respective research while having access to an interdisciplinary linkup in a "melting pot" environment. MANA's Principal Investigators serve as mentors for ICYS-MANA Researchers.

### Cutting-edge research facilities

MANA researchers have full access to the world's most advanced, high-performance research facilities at NIMS. MANA is home to the MANA Foundry, a collection of top-class equipment that provides the backup for nano-architectonics research ranging from nano-fabrication to nano-characterization. In addition to the Foundry, MANA houses various shared facilities and employs experienced technicians to provide maintenance and support.



Monochromated Double-corrected Microscope (300kV)



MANA Foundry: X-ray photoelectron spectroscopy (XPS)

### Thorough support for foreign researchers

MANA provides comprehensive assistance to foreign researchers in matters such as registration procedures, finding housing, and emergencies to get them established in Japan. MANA also offers regular Japanese culture and Japanese language classes to foster an understanding of the host country. There are public accommodation facilities nearby for foreign researchers who work at MANA, making for an ideal environment.



Technical staff providing research support



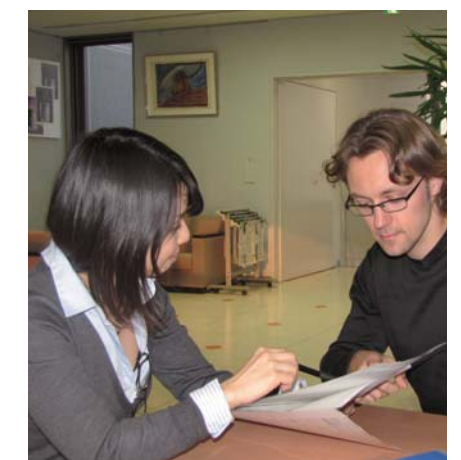
Furoshiki (cloth wrapping) class for foreign researchers

### Making all researchers welcome

The official language of MANA is English. MANA employs experienced staff who are fluent in the language, and administrative support systems are in place to ensure that scientists of all nationalities can focus on their research. Seminars and meetings are held in English, and e-mail communication, intranet information, research plans, and administration documentation are all in English as well. Major information pamphlets, the web site, and other publications are to a large extent bilingual.



MANA Café, a venue for mutual communication and mingling



Administrative staff providing clerical support



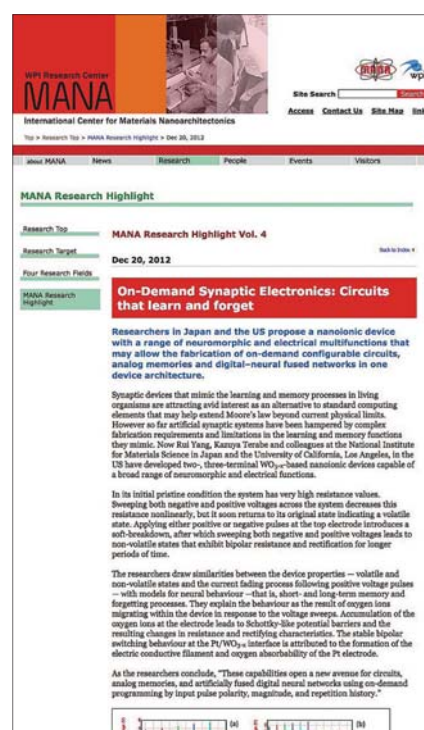
## Getting the Message out to Academics, the Community, and the Next Generation

### MANA International Symposium

Once per year, MANA hosts an international symposium intended to disseminate research results to a wider audience. In addition to invited presenters, including Noble laureates from around the globe, all the MANA affiliated researchers also participate in three days of presentations and poster sessions, covering the latest research activities. Each year, over 300 participants engage in active discussions.

### Online news "MANA Research Highlight"

MANA's latest research findings are reported in a timely manner via the online "MANA Research Highlight" series that aims at providing information on materials science to experts throughout the world. To become a subscriber, e-mail [mana-pr@ml.nims.go.jp](mailto:mana-pr@ml.nims.go.jp).



MANA Research Highlight Vol. 4



MANA International Symposium, February 29, 2012

### WPI Joint Symposium

The WPI Joint Symposium, co-organized by WPI centers, has started in 2011 and is held annually to encourage a close relationship between WPI scientists and the gen-

eral public including high and junior high school students. The second symposium organized by MANA was held at Tsukuba International Convention Center on November 24, 2012.



Participants of the WPI Joint Symposium receive an explanation about titanium oxide nanosheet from a MANA researcher (right).

**Advisors** Advisors including Nobel Laureates winners and prominent researchers provide valuable advice to MANA scientists, drawing on their extensive experience.



**Heinrich Rohrer**  
Nobel Laureate in Physics (1986)



**Sir Harold W. Kroto**  
Professor, Florida State University  
Nobel Laureate in Chemistry (1996)



**C.N.R. Rao**  
Honorary President,  
Jawaharlar Nehru Centre for  
Advanced Scientific Research



**Galen D. Stucky**  
Professor, University of California  
Santa Barbara



**Teruo Kishi**  
Former President,  
National Institute for  
Materials Science

### Evaluation Committee Members

Evaluation committee members provide MANA with their critical comments and expert recommendations on the operation and research strategy of MANA projects.



**Anthony K. Cheetham**  
Professor,  
Cambridge University



**Takuzo Aida**  
Professor,  
University of Tokyo



**Morinobu Endo**  
Professor,  
Shinshu University



**Horst Hahn**  
Professor,  
Karlsruhe Institute  
for Technology



**Kazuhito Hashimoto**  
Professor,  
University of Tokyo



**Yoshio Nishi**  
Professor,  
Stanford University



**Manfred Rühle**  
Professor,  
Max Planck Institute  
for Metals Research



**Rodney S. Ruoff**  
Professor,  
University of Texas

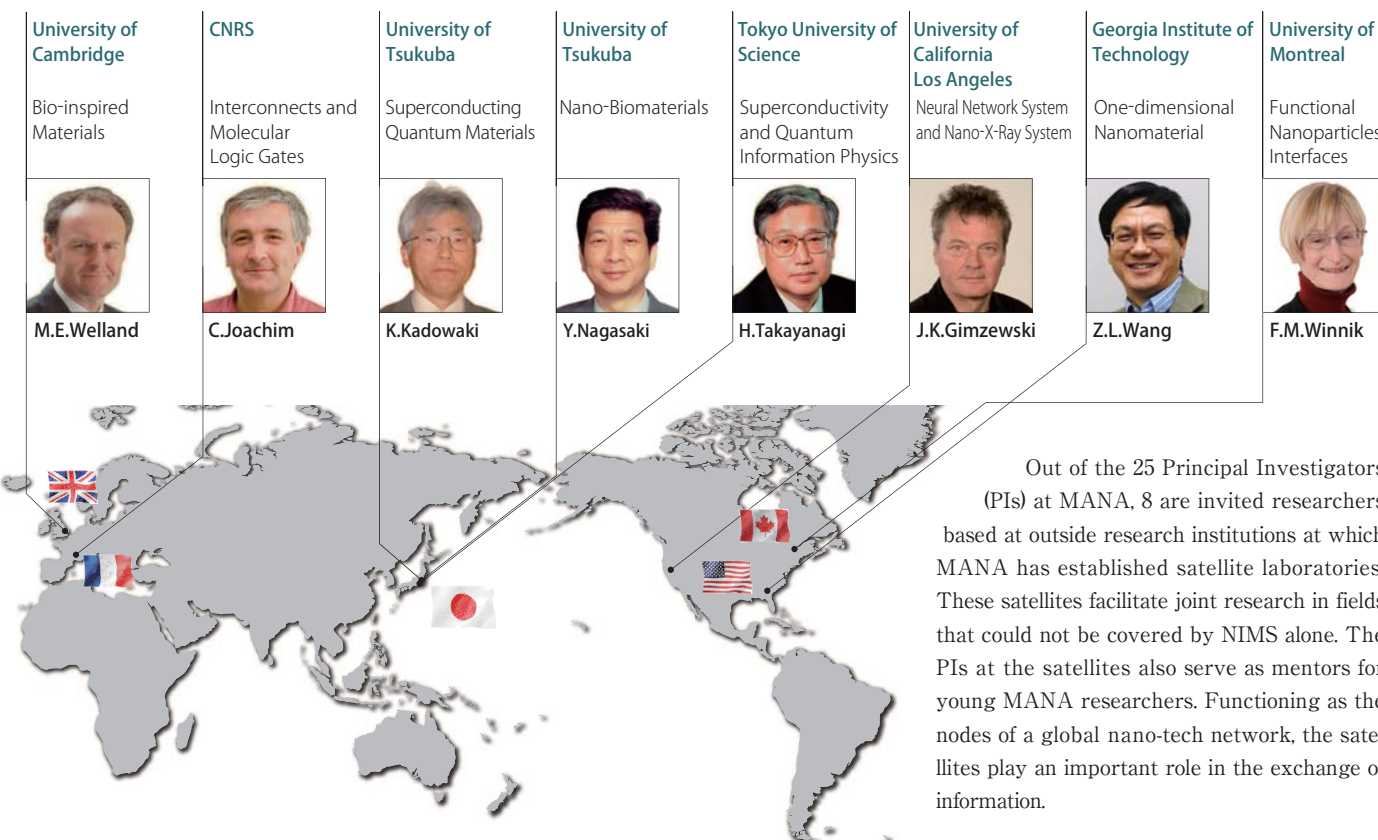


**Louis Schlapbach**  
Former CEO,  
Swiss Federal  
Laboratories for Materials  
Testing and Research



**Kazunobu Tanaka**  
Principal Fellow, Center  
for Research and  
Development  
Strategy,  
Japan Science and  
Technology Agency

## GLOBAL NANO-TECH NETWORK .....



Out of the 25 Principal Investigators (PIs) at MANA, 8 are invited researchers based at outside research institutions at which MANA has established satellite laboratories. These satellites facilitate joint research in fields that could not be covered by NIMS alone. The PIs at the satellites also serve as mentors for young MANA researchers. Functioning as the nodes of a global nano-tech network, the satellites play an important role in the exchange of information.





Chief Operating Officer  
Yoshio Bando



Director-General  
Masakazu Aono



Administrative Director  
Takahiro Fujita

MANA Principal Investigator (PI)

\* Field Coordinator \*\* Satellite Co-Director \*\*\* Satellite PI

Principal Investigator is an internationally known world top-class scientist who plays leading roles in achieving MANA research targets and in fostering younger researchers through mentoring. Principal Investigators are selected from NIMS and other domestic and overseas institutes.

Nano-Materials Field

7 Pls

T.Sasaki\*  
NIMS

K.Ariga  
NIMS

Y.Bando  
NIMS

T.Chikyow  
NIMS

D.Golberg  
NIMS

K.Kadowaki\*\*\*  
Univ.Tsukuba

Z.L.Wang\*\*\*  
Georgia Tech

Nano-System Field

9 Pls

M.Aono\*  
NIMS

J.K.Gimzewski\*\*  
UCLA

T.Hasegawa  
NIMS

X.Hu  
NIMS

C.Joachim\*\*\*  
CNRS

T.Nakayama  
NIMS

K.Tsukagoshi  
NIMS

M.Welland\*\*  
U.Cambridge

Nano-Power Field

4 Pls

K.Uosaki\*  
NIMS

K.Takada  
NIMS

O.Yaghi  
UCLA

J.Ye  
NIMS

Nano-Life Field

4 Pls

T.Aoyagi\*  
NIMS

G.Chen  
NIMS

Y.Nagasaki\*\*\*  
Univ.Tsukuba

F.M.Winnik\*\*\*  
Univ.Montreal

MANA Workforce Out of 194 researchers at MANA, 103 (53 percent) are foreign nationalities hailing from 25 countries.  
(Current as of January 2013)

Position	Principal Investigators	Group Leaders	Associate Principal Investigators	Faculty Scientists	Postdoctoral Researchers	Graduate Students	Administrative Staffs and Technical Staffs	Total
Number	24	11	1	57	61	41	27	222
Non-Japanese	9	0	0	8	53	33	2	105
Female	2	1	0	7	19	14	16	59

Group Leader

A Group Leader is leading a research group of a research unit headed by one of Principal Investigators.

Associate Principal Investigator

An Associate Principal Investigator is a promising young scientist, who is expected to perform its own research as almost comparable to Principal investigators'.

MANA Scientist

A MANA Scientist conducts research together with a Principal Investigators and a Group Leader.

Independent Scientist

An Independent Scientist is a younger researcher who can conduct its own research independently in the 3D system (see page 14).

ICYS-MANA Researcher (Postdoc)

An ICYS-MANA Researcher is a postdoctoral fellow selected from all over the world by open recruitment. It conducts its own research independently while receiving advice from mentors and Principal Investigators.

MANA Research Associate (Postdoc)

A MANA Research Associate is a postdoctoral fellow working in a group of a Principal Investigator or an Independent Scientist.

Graduate Student

A Graduate student is a doctor-course student affiliated with NIMS. It participates in research at MANA under the tutelage of a Principal Investigator, a MANA Scientist, and an Independent Scientist.

18

19